

Wellman NextGen

Make Life Easier

Web + Cloud Based Drilling + Project Life Cycle Software

POWERFUL

Wellman NextGen monitors, controls and captures all daily in-field costs and activities during the full well life cycle.

- ➊ Maximize your efficiencies and increase your profits
- ➋ Powerful and highly intuitive for users
- ➌ Easy to implement and adopt
- ➍ Leverages teams and the E&P ecosystem
- ➎ Highly adaptable to meet any drilling and completion needs

Implement Wellman in days and train field personnel in under 20 mins.

REPORTING & ANALYTICS

RES dashboards and analytics to improve communication, decision making and efficiencies.



COMPLETE PROJECT LIFECYCLE



KEY BENEFITS

 <p>Improves Productivity</p>	 <p>24/7 Support</p>	 <p>Improve Accuracy of Critical Data</p>	 <p>Optimize Operational Expenditures</p>
 <p>Reporting + Analytics Easy Track NPT</p>	 <p>Most Frequent Software Updates vs all others</p>	 <p>Data Security (SOX/CA - SOX compliance)</p>	 <p>Easy to Use:</p> <ul style="list-style-type: none"> - Streamlined workflow - Intuitive navigation - Automated reporting

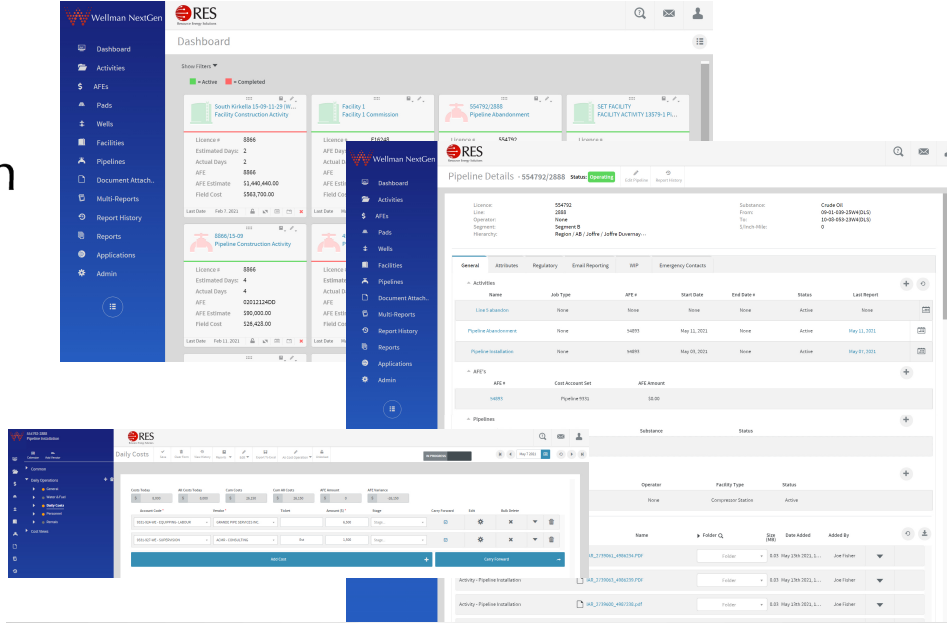


Wellman NextGen

PERFORMANCE

Wellman NextGen is designed for oil and gas, engineering and national oil companies with rigorous drilling and completion (D&C) requirements, providing collaboration across all business entities in the E&P ecosystem. Wellman NextGen offers superior workflow, change management and tracking with extended reporting and analysis capabilities.

Wellman NextGen allows for simplified and robust integration with industry standard applications such as authorization for expenditure (AFE), financial, global information systems (GIS) and more.



PRACTICAL

Wellman NextGen is specifically designed to meet the growing need for practical and sophisticated software at the lowest total cost of ownership.

Wellman NextGen can accommodate companies of all sizes, providing the most advanced well data management functionality available in the market today.

KEY FEATURES



Supports the full project lifecycle



Built-in workspaces and dashboards



Report all levels of cost, and work history



Built-in messaging and collaboration



Built-in alerts and notifications



User and role - based permissions



Project and cost management



Automated report distribution



Adaptive security model



Highly customizable and extendable



Client Driven Roadmap



Full audit and change tracking



PLEASE CALL US FOR A QUICK DEMO TO PROVE OUR CLAIMS

www.resourceenergysolutions.com
sales@resourceenergysolutions.com
+1-403-245-0220